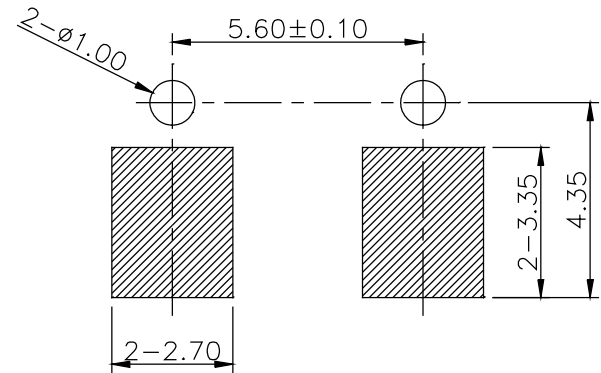
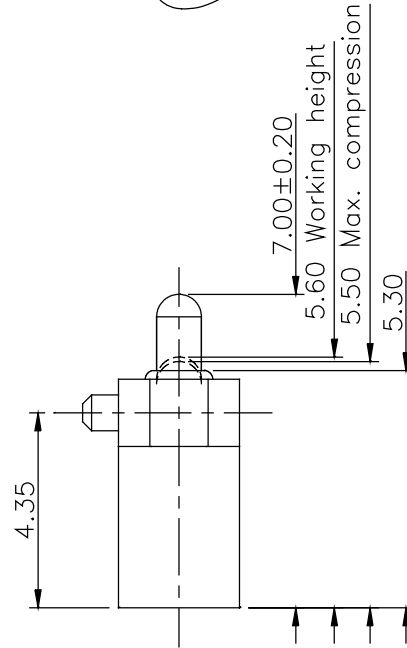
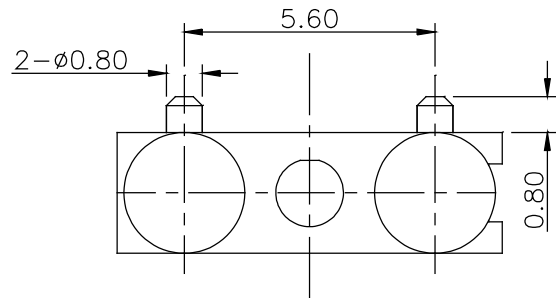
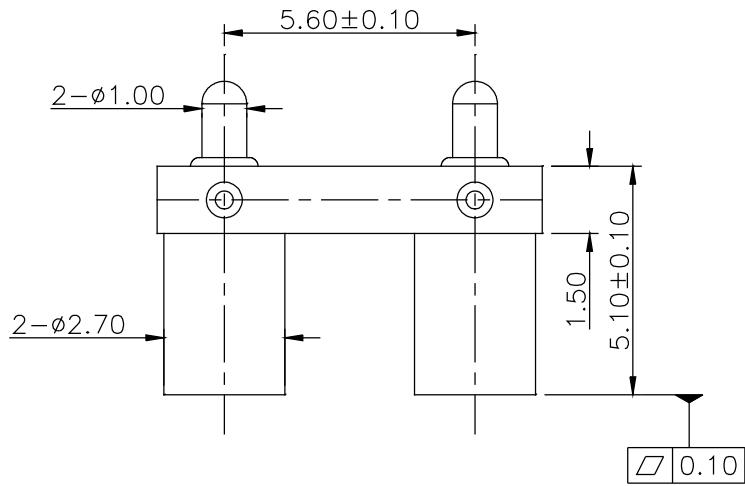
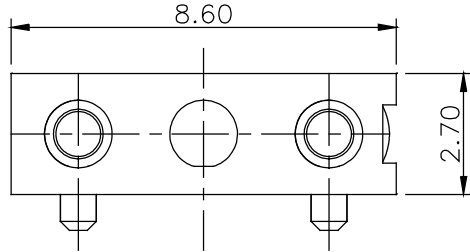
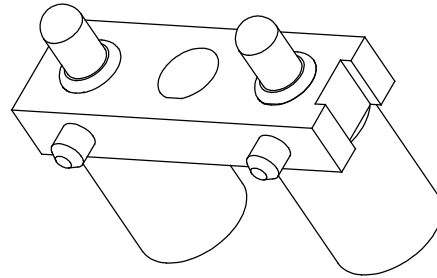


Please Approve this Drawing

Date	
Signature	



RECOMMEND PCB LAYOUT(TOP VIEW)
Layout Tolerance: ± 0.05mm

REVISIONS			
NO.	DESCRIPTION	DCN NO.	DATE
A.0	INITIAL RELEASE	2201503010	2015.03.12
A.1	组装弹力变为130g	2201504019	2015.04.17

NOTES:

- Materials:
 - .Housing: HTN+30%GF(UL94V-0)
 - .Plunger&Barrel: Brass
 - .Spring: SUS
 - .Ball: SUS
- Plating:
 - .Plunger:10 micro-inch minimum Au over 50~100 micro-inch Ni.
 - .Barrel:5 micro-inch minimum Au over 50~100 micro-inch Ni.
- Electrical:
 - .Rated Current & Voltage: DC 12V ; 3A.
 - .Contact Resistance:50 mohm maximum at Nor. Working Height(Quiescence).
- Mechanical:
 - .Spring Force:130g±25% at Working Height. ⚠
 - .Durability:10,000 cycles(minimum).
- To ensure the best usage, please operate it based on the working height.
- Harmful material control please follow DOC. NO."DQ03050".

DRAWN	nielaing	SCALE:	6 : 1	UNIT	mm	DRAWING NO.	P2723MF01-03B280HB
CHECKED		SHEET:	1 of 1	PROJECT		TITLE:	Pogo Pin Connector
APPROVED		DATE:	2015.04.17	VER.	A.1		

THE UNMARKED TOLERANCE ARE AS BELOW :

LENGTH	ANGLE
0~6.0	±0.05mm
>6~30	±0.10mm
>30~120	±0.15mm
0	±2.0°
0.0	±1.0°
0.00	±0.50°

C.C.P. (DG) CONTACT PROBES CO.,LTD.
东莞中探探针有限公司

The information in this document is property of C.C.P company and should not be copied or reproduced in any other way, without written permission.