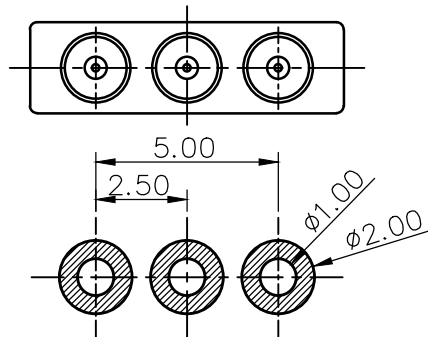
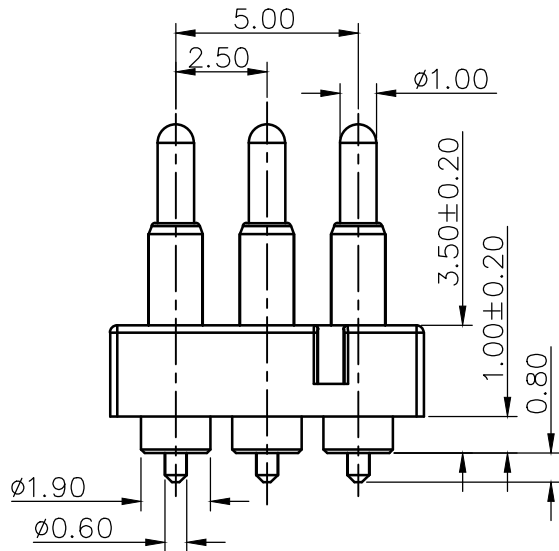
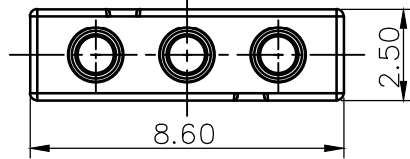
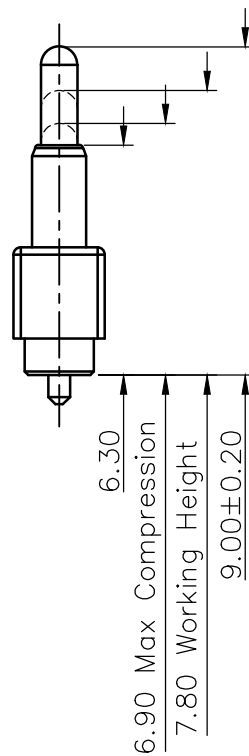
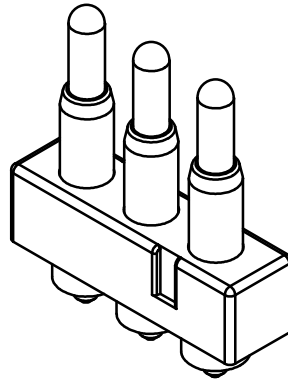


Please Approve this Drawing

Date	
Signature	



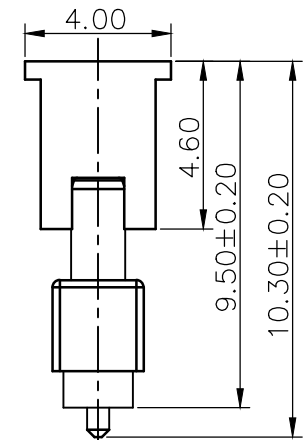
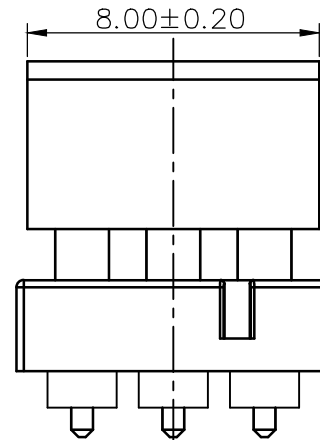
RECOMMEND PCB LAYOUT
Layout Tolerance: $\pm 0.05\text{mm}$



REVISIONS			
NO.	DESCRIPTION	DCN NO.	DATE
A.0	INITIAL RELEASE	ECN-2201510041	2015.10.22

NOTES:

- Materials:
 - .Housing : Black HTN(UL94V-0)
 - .Plunger: Brass C3604
 - .Barrel: Brass C3604
 - .Spring: SUS304
- Plating:
 - .Contact Surface :10 micro-inch minimum Au over 50~100 minimum micro-inch Ni.
- Electrical
 - .Rated Current & Voltage : DC 12 V ; 1A
 - .Contact Resistance:50 mohm maximum at Working Height(Quiescence)
- Mechanical
 - .Spring Force :100g $\pm 20\%$ at Working Height
 - .Durability:10,000 cycles(minimum)
- To avoid arcing issue, The adaptor start to power supply after connector mated fully
- To ensure the best usage, please operate it based on the working Height.
 - .Based on the Engineering Drawings, shall not exceed the maximum allowed compression.
- Harmful material control please follow DOC.NO."DQ03050 "



DRAWN	吴鹏	SCALE:	5 : 1	UNIT	mm	DRAWING NO.	P2223MP01-03C250MR
CHECKED		SHEET:	1 of 1	PROJECT		TITLE: Pogo Pin Connector	
APPROVED		DATE:	2015.10.22	VER.	A.0		
THE UNMARKED TOLERANCE ARE AS BELOW :				C.C.P. (DG) CONTACT PROBES CO.,LTD. 东莞中探探针有限公司			
LENGTH		ANGLE		The information in this document is property of C.C.P company and should not be copied or reproduced in any other way, without written permission.			
0~6.0	$\pm 0.05\text{mm}$	0.	$\pm 2.0^\circ$				
>6~30	$\pm 0.10\text{mm}$	0.0	$\pm 1.0^\circ$				
>30~120	$\pm 0.15\text{mm}$	0.00	$\pm 0.5^\circ$				